

# MODEL ML-220XL

20,000 LB. CLEAR FLOOR 2 POST LIFT



#### Safety Weight Gauge

Shows vehicle weight, aids vehicle diagnosis, visually shows when lift is lowered on the locks

**25**  
YEAR  
WARRANTY

**THE LIFT YOU  
CAN'T WEAR OUT**

**MOHAWK LIFTS**

*Americas Best Lift Investment...*

Still proudly designed, welded  
and manufactured in the U.S.A.





# MODEL ML-220

## SOLID, SAFE & PROVEN HEAVY DUTY LIFTS FOR... HEAVY DUTY SERVICE

### MOHAWK DESIGN

- Mohawk columns are constructed of  $\frac{3}{4}$ " thick forklift masts, for a **lifetime** of trouble-free service.
- Each Mohawk carriage rolls on 8 double-sealed, self-lubricating, steel **ball bearing rollers** (NOT plastic sliders).
- Two 4" heavy duty cylinders make for safer, steadier lifting than single cylinder lifts or models with tiny cylinders.
- Easily **adjustable** overhead stainless steel hydraulic lines can be set at **any** height (or routed in floor) to accommodate all tall trucks and vans.
- 4.5" (lowered height) extra long, three stage swing arms fit under most all passenger cars & trucks.
- Equipped with 3" and 6" stacking adaptors with a spin-up adjustable pad for precise level lifting.
- Standard with three stage swing arms that can reach the furthest lifting points.



▲ Two post lifts offer **FULL unobstructed under vehicle access** for all repairs, take up minimal bay space and leaves wheels hanging free for tire, brake or any other necessary repairs.

Mohawk lifts **DO NOT** use height restrictive overhead cable covers that limit lifting height.



▲ **RUSTPROOF ALUMINUM ADAPTORS**  
3" and 6" locking stackable adaptors with a spin-up adjustable pad for precise level lifting

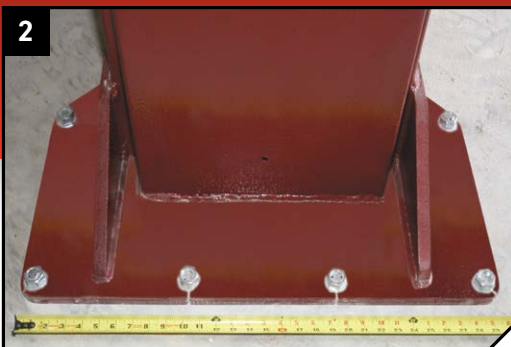
### OPERATION

- Hydraulic fluid is pumped between the two cylinders through the stainless steel hydraulic lines. Patented hydraulic synchronization eliminates the need for restrictive height overhead covers, cables, pulleys or equalizer chains.
- To raise the carriages, Mohawk's ML-220XL uses direct drive lifting rods which eliminate the wear & maintenance associated with lifts that use cables and chains.
- Mohawk carriages roll on 8 double sealed, self-lubricating, steel ball bearing rollers, for maintenance-free operation.
- Mohawk bearings eliminate constant friction and wear. Competitive lifts use plastic slide blocks that wear out.

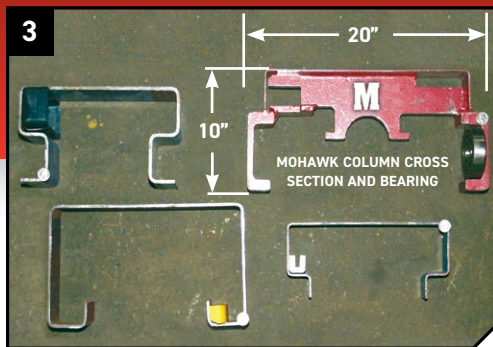
### MOHAWK PATENTED INDUSTRY LEADING SAFETY SYSTEMS

- Mohawk lifts feature **all position** mechanical safety locks in both columns, starting at the ground, to full lifting height.
- Patented, infinite position, internal hydraulic safeties backed by external pressure compensated flow controls and velocity fuse valving.
- Swing arm restraints automatically engage upon lifting and automatically disengage when the vehicle has been fully lowered.

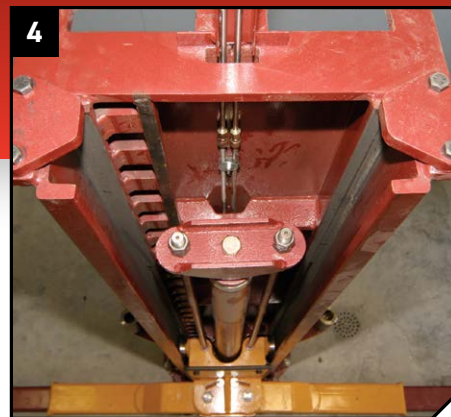




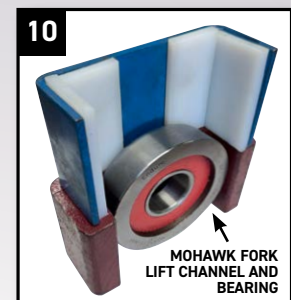
▲ Mohawk's **large and stable footprint** measures 30" wide by 24" is made of 3/4" thick plate. Mohawk's large base gives stability to the lift, while distributing the load to the shop floor.



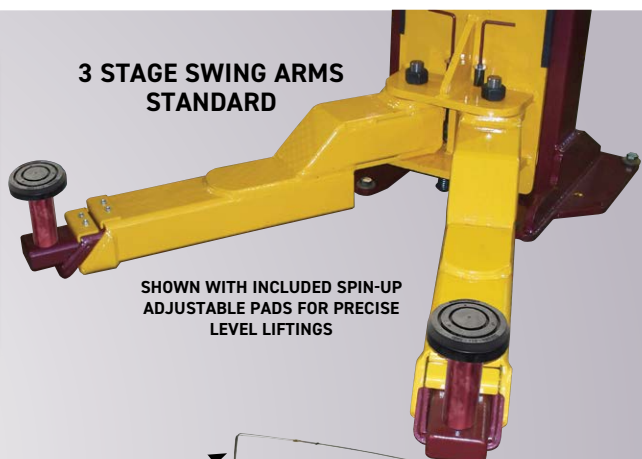
▲ Mohawk's fork lift channel & bearing (top right) VS. 3 different sheet metal columns which use plastic slides. Like your fork lifts mast, **Mohawk Lifts DO NOT WEAR OUT!**



▲ **Heavy duty column construction** with direct drive cylinders, direct drive lifting rods (not cables) and stainless steel hydraulic lines (not rubber hoses) which will never wear.



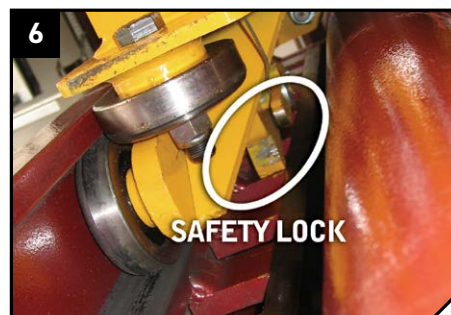
▲ **FORK LIFT CHANNEL** & bearing (bottom) vs. competitive columns & plastic slider (top).



▲ **LARGE 4" CYLINDERS** equal longer seal life and lower operating pressures vs. smaller competitive cylinders.



▲ Each carriage rolls on (8) 4" double sealed, self lubricating, heavy duty ball bearing rollers for a **lifetime of trouble-free service** (not plastic slide blocks).



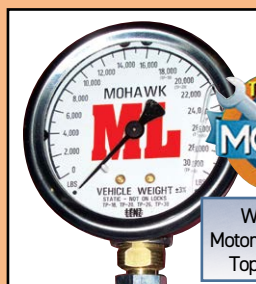
▲ **ALL** position 1" thick mechanical locks on **BOTH** carriages engage the full length of travel. Available with optional single point air lock release (requires air to lift).

## WHY MOHAWK

- Mohawk lifts feature **all position** mechanical safety locks in both columns, starting at the ground, to full lifting height.
- The best, and most inclusive warranty in the lift business; 25 years structural, 10 year mechanical, plus limited lifetime cylinder seal warranty.

***Mohawk Builds the Best Lifts,  
With the Best Warranty.***

## 2 POST ACCESSORIES



**Safety Weight Gauge**  
to determine vehicle weight, aid vehicle diagnosis & show lift is lowered onto locks.

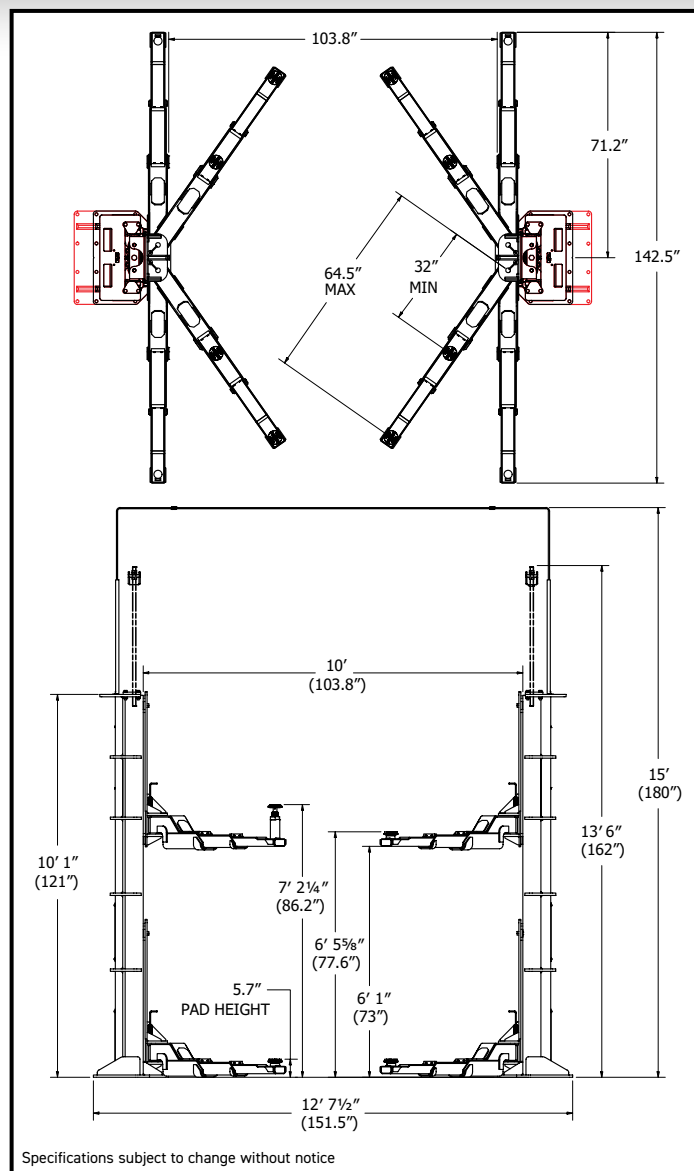


**Speedlane Adaptor**  
Slips on quickly for instant lifting without positioning swing arms yet leaves the wheels hanging free for tire and brake work.



# MODEL ML-220XL SPECIFICATIONS

Model:	<b>ML-220XL</b>
Capacity:	20,000 lbs.
Motor Rating:	4 HP/208-230V, Single-phase (3Ø optional)
Synchronization:	Direct drive hydraulic fluid displacement using no chains, cables, or overhead obstructions
Arm Pad Height:	5' 11 1/16" min.
Lifting Height (stroke):	73" (6') under arm
Arm Pad Height @ Full Rise:	7' 2 1/4" (86.2")
Overall Width:	12' 7 1/2" (151.5") <b>adjustable</b>
Width Between Posts:	Adjustable 9' 6" to 10' (114" to 120")
Width Between Lifting Arms:	103.81" <b>adjustable</b>
Column Height:	10' (120")
Max. Cylinder Height:	13' 6" (162")
Overhead Hydraulic Line Height:	15' (180") Standard ( <b>adjustable</b> to accommodate any height ceiling or routed in-floor)
Weight:	4,100 lbs.
Concrete Floor Requirements:	<b>Standard Base:</b> 6 1/2" of 4,000 psi concrete <b>Wide Base:</b> 5 1/2" of 4,000 psi concrete
Anchoring System: Included	(16) 3/4" x 6" bolts
Mechanical Safety Locks:	<b>Automatic;</b> multi-position starting @ 5" off the floor
Hydraulic Safety Systems:	<b>Automatic;</b> all position
Swing Arm Restraints:	<b>Automatic</b> upon ascent
Cylinders:	2 (1 per column)
Drive System:	Direct drive (using no cables or chains)
Lifting Speed:	90 seconds (faster with lighter load)
3" Frame Adaptors (stackable):	4 included as standard equipment
6" Frame Adaptors (stackable):	4 included as standard equipment
Spin-Up Adjustable Pad:	4 included as standard equipment
Steel Carriage Bearings:	(16) 4" diameter (8 per carriage) double sealed, self-lubricating ball bearing rollers
Floor Access Between Posts:	Clear and unobstructed
Warranty:	<b>25 years structural, 10 year mechanical, plus limited lifetime cylinder seal warranty</b>



Scan the QR code to learn how Mohawk's two post vehicle lifts compare to the competition. [mohawklifts.com/dare2compare](http://mohawklifts.com/dare2compare)

## MOHAWK LIFTS

Mohawk Lifts, LLC.  
P.O. Box 110  
65 Vrooman Ave  
Amsterdam, NY 12010  
(800) 833-2006  
(518) 842-1431  
FAX: (518) 842-1289  
[www.mohawklifts.com](http://www.mohawklifts.com)

AVAILABLE UNDER DISCOUNTED GOVERNMENT  
CONTRACT IN ALL 50 STATES



DISTRIBUTED BY: