

MOHAWK TR-SERIES SPECIFICATIONS

TR LIFT SAMPLE SPECIFICATIONS

Capacities	35,000, 50,000 or 75,000 lbs.
Lifting speed	120 seconds
Motor rating	10 HP 220 VAC, 3 Phase
Lifting height (stroke)	5'
Runway height at full stroke	6'-2 1/2"
Weight	17,000 lbs. (with 25' runways)
Overall length	34'-11 3/4" (with 25' runways)
Overall width	14'-5 1/2" (adjustable)
Width between posts	11'-10" (adjustable)
Track width	24" or 32"
Track Length	20', 25', 30', 35' or longer on request
Lifting mechanism	(4) Direct drive cylinders using no cables, chains or mechanical lifting screws
Synchronization (side to side)	Hydraulic fluid displacement backed by twin opposing leaf chains
Synchronization (fore and aft)	Manual or automatic controls gear type flow dividers, integral differential relief valving, with an automatic fluid track leveling system
Mechanical safety systems	Multi-position locks in each post starting at 10"
Hydraulic safety systems	Integral hydrostatic line blow off flow control devices & velocity fuses
Electrical safety systems	Cross-wired electronic systems
Push button electronic console	NEMA Type 4 Waterproof enclosure
Controls	Solenoid operated
Automatic Wheel chocks	Standard equipment front & rear
Concrete requirements	4000 PSI concrete 6" thick floor or (4) 6'x6' footings 12" deep
Work area around/under lift	Clear and unobstructed with no side obstructions
Warranty	3 years-.1 year on electronic components

U.S. DoD National Stock Number # 4910-21-912-3434

AVAILABLE OPTIONS

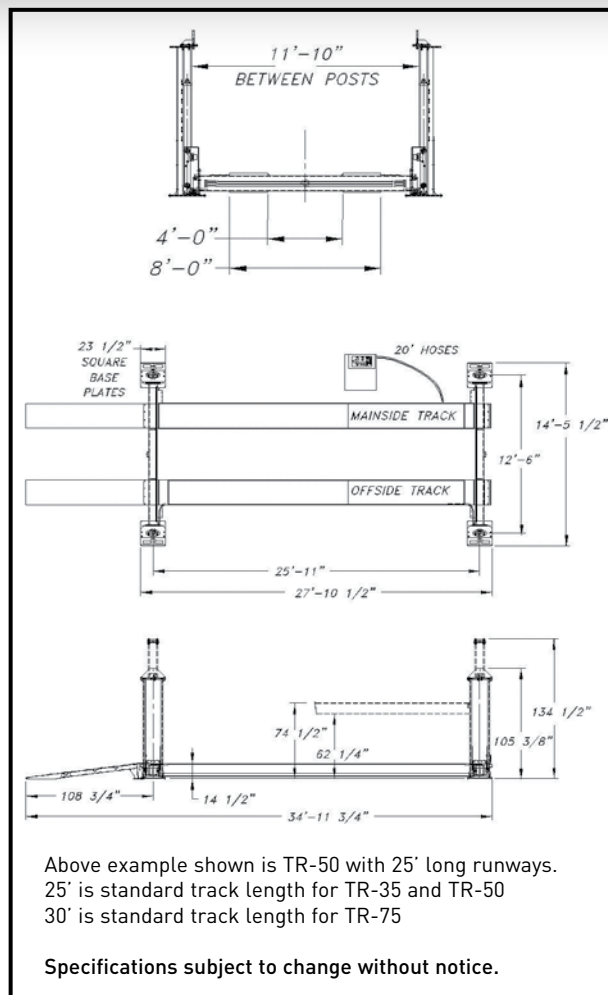
- RJ-50-AH Pneumatic Jacking Beam
- Drive through ramps
- TD-1000 and TD-2000 Tire Dollies
- Single Phase Power @ 208-240 VAC
- Transmission Jack
- Longer or Shorter Cross Rails
- Obstacle Sensor Package
- Custom Approach Ramps
- Track Lighting
- JP-50 Jacking Platforms
- Rolling Oil Drain Pan
- Three Phase Power @ 440-480 VAC
- 110V outlets
- Air lines plumbed into tracks
- Scissor Lifting Table
- 4'x4' base plates (for shops with inadequate concrete.)
- Wide 32' runways

www.facebook.com/mohawklifts

MOHAWK LIFTS

Mohawk Lifts, LLC.
P.O. Box 110
65 Vrooman Ave
Amsterdam, NY 12010
(800) 833-2006
(518) 842-1431
FAX: (518) 842-1289
www.mohawklifts.com

AVAILABLE UNDER DISCOUNTED GOVERNMENT
CONTRACT IN ALL 50 STATES



Above example shown is TR-50 with 25' long runways.
25' is standard track length for TR-35 and TR-50
30' is standard track length for TR-75

Specifications subject to change without notice.

AUTOCAD specs available online at
www.mohawklifts.com/architects

For larger capacity four post lifts, see the models
TR-110/TR-120 brochure at www.mohawklifts.com

For longer, shorter, wider, heavier or customized
lifts **call Mohawk 1-800-833-2006 or 518-842-1431**

Mohawk builds the best products with the finest materials, to the highest standards. Just compare our lifts. Our staff will assist you with a fleet evaluation, design assistance and answer any technical questions you have. We invite your calls.

Mohawk lifts are manufactured in compliance with the following standards:
ALI, ANSI, ASME, AISI, ASTM, ASA, NEC, AWG, NEMA.

MEETS CURRENT NATIONAL ANSI SAFETY CODE FOR LIFTS.

DISTRIBUTED BY: