





# CL10AV3 LAUNCH

## 10K VERSYMMETRIC® ADJUSTABLE WIDTH 2-POST LIFT

### Overview:

We are pleased to announce a significant upgrade for the CL10V3 – our **Adjustable Width Feature**. This enhancement is part of our commitment to providing flexible and innovative solutions to meet the ever-evolving needs of automotive shops.

### SERVICE BAY SPECIFICATIONS

-  **HEIGHT:** 12' minimum
-  **WIDTH:** 14' recommended
-  **DEPTH:** 24' recommended
-  **POWER:** 208-230v, 1pH, 30 Amps



### PRODUCT SPECIFICATIONS

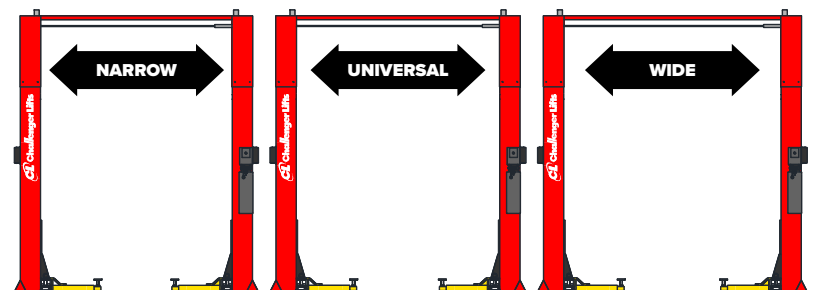
| MODEL NUMBER                      | CL10AV3                               | CL10AV3-2          | CL10AV3-3          |
|-----------------------------------|---------------------------------------|--------------------|--------------------|
| Description                       | Standard                              | 2' Extensions      | 3' Extensions      |
| Lifting Capacity                  | 10,000 lbs.                           |                    |                    |
| Lift Configuration                | Versymmetric®, 3-Stage Front & Rear   |                    |                    |
| Rise Height                       | 74½"                                  |                    |                    |
| Height of Columns                 | 11' 2" or 11' 8"                      | 13' 2" or 13' 8"   | 14' 2" or 14' 8"   |
| Max. Extended Cylinder Height     | 11' 11"                               |                    |                    |
| ▶ <b>Adjustable Width Overall</b> | 11' 6½"                               | 12' ½"             | 12' 6½"            |
| Drive Thru Clearance              | (-12") 100"                           | (-6") 106"         | (MAX) 112"         |
| Floor to Overhead Switch          | 10' 8½" or 11' 2½"                    | 12' 8½" or 13' 2½" | 13' 8½" or 14' 2½" |
| Front Arm Reach                   | Min. 20" Max. 42"                     |                    |                    |
| Rear Arm Reach                    | Min. 37½" Max. 60"                    |                    |                    |
| Screw Pad Height                  | Min. 3¾" Max. 6½"                     |                    |                    |
| Inside Columns                    | (-12") 110"                           | (-6") 116"         | (MAX) 122"         |
| Low Lock Height                   | 12" Net Rise                          |                    |                    |
| Rise Time                         | Standard: 38s QuickCycle™: 24s (est.) |                    |                    |
| Max. Load per Arm                 | 2,500 lb.                             |                    |                    |
| ALI® Certified                    | <input checked="" type="checkbox"/>   |                    |                    |

### WIDTH CONFIGURATIONS

To better serve our customers' diverse lifting needs and the growing demand for Electric Vehicle service, we've upgraded our CL10V3. This new adjustable design ensures that our entire CL Series can now accommodate a wider range of vehicles, while providing your technicians with more space to work efficiently. Add flexibility to your shop with the enhanced width and height adjustability.

- ▶ **Narrow:** Space Constraints or Express Pads configuration
- ▶ **Universal:** Cars, SUVs, Trucks, Most Electric Vehicles
- ▶ **Wide:** Optimal for Cars, EVs and Luxury vehicles

*\*The CL10A can also be set at the current 11' 10" width.*

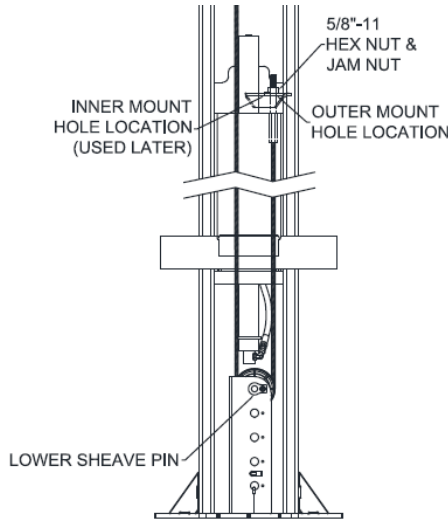


# ADJUSTABLE WIDTH SET-UP

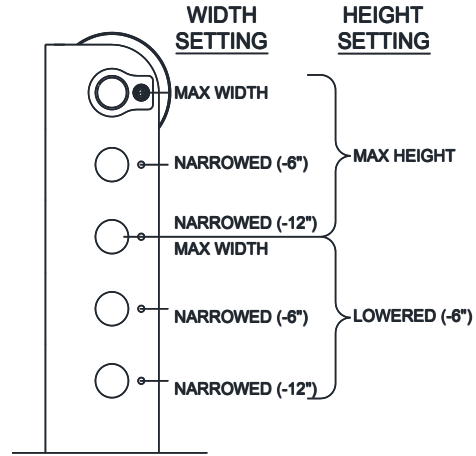
This page features excerpts from the manual. Please refer to the installation and operation manual for complete installation of the CL10AV3.

## Lift Preparation:

1. With the column assemblies lying flat, remove cable and hose rolls from inside the columns and manually push carriages up to gain access to sheave at base of column.
2. Remove hex bolt and sheave pin from sheave bracket, **Fig. 2**
3. Determine the sheave location on the lower bracket based on the overall height and width of lift at its chosen configuration. See **Fig. 3** below.



**Fig. 2 - Cable Routing Layout**

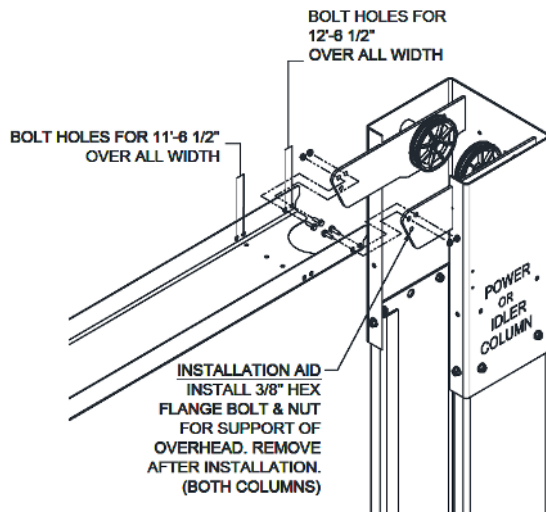


**Fig. 3 - Sheave Position in Lower Bracket**

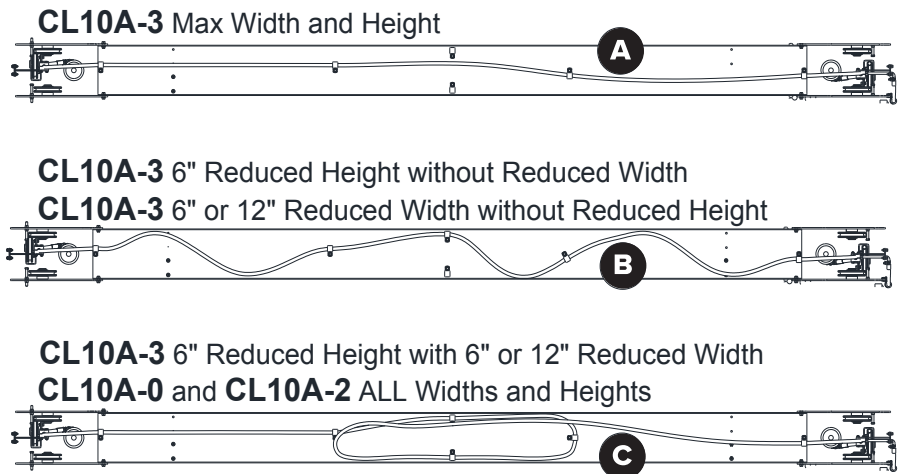
## Overhead:

1. Before raising overhead into position install 4 (2 per column) hex flange bolts and nuts in middle hole of column extension for temporary support of overhead. Lift overhead assembly up into position and install with 8 (4 per column) 3/8-16 x 3/4" lg hex flange bolts and hex flange nuts per side as shown in **Fig. 8**.

► For the max width position, the outer overhead holes will be used. For the (-6") width, one set of outer overhead holes and one set of inner overhead holes will be used. For the (-12") width, the inner set of overhead holes will be used.



**Fig. 8 - Overhead Assembly**



**Fig. 13c - Hose Routing, Overhead**

